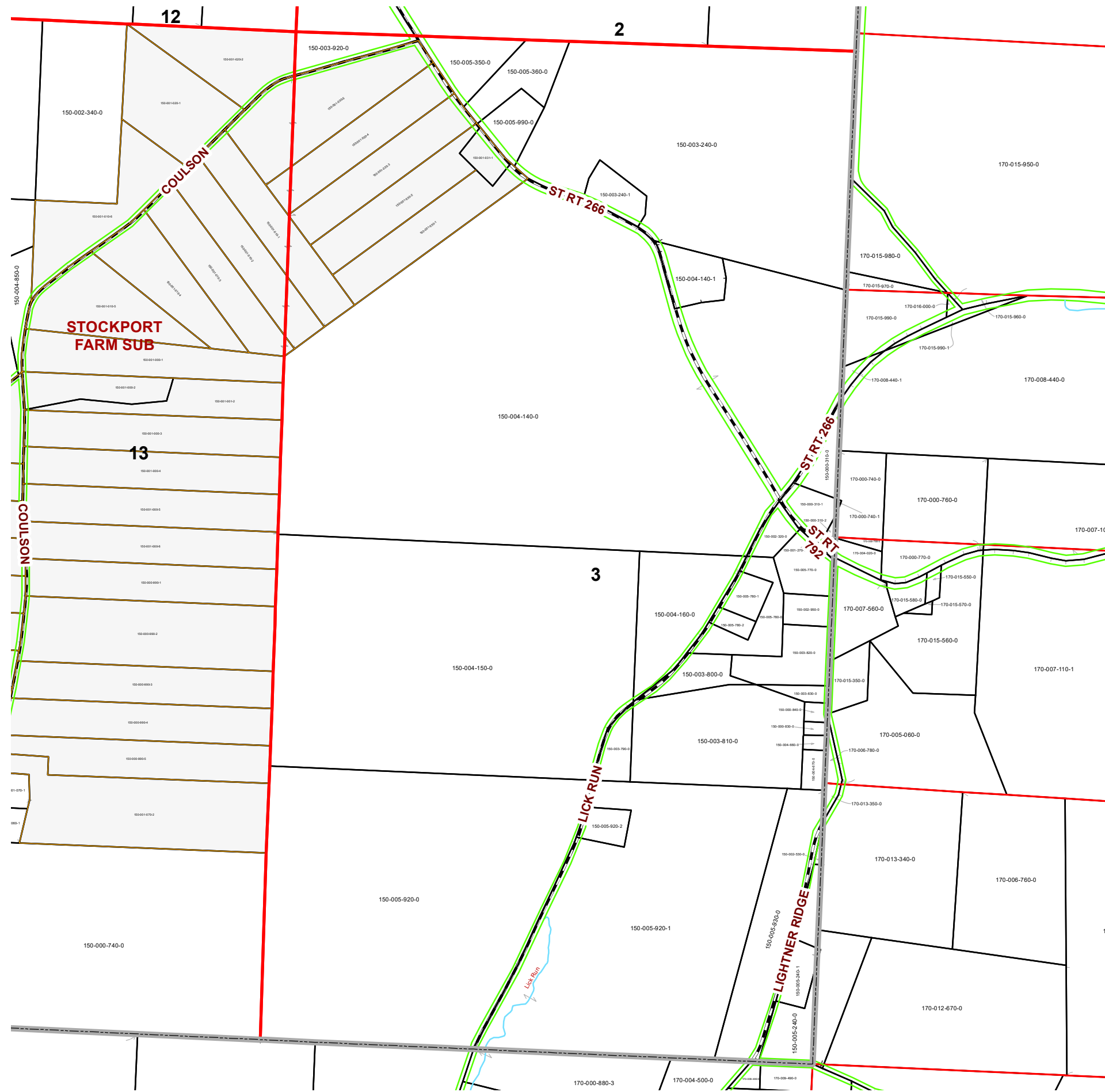
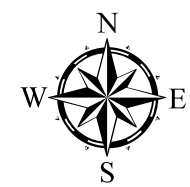


PENN TOWNSHIP FRACTION 3 R 12 TWP 9 MORGAN COUNTY, OHIO



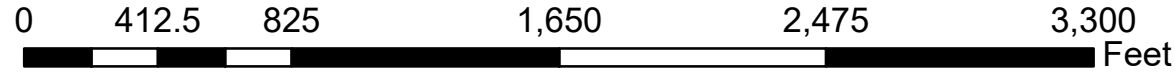
PIN	Owner	LegalDescr	Acres	VOL	PAGE	Survey_Ref
150-003-790-0	CAMPBELL JONNA	R11 T09 S00 FR 3 SD 1	1	OR75	731	NoSurvey.pdf
150-005-780-2	CAMPBELL KYLE BRANDON	R11 T09 S00 FR 3 SD 3	0.527	OR225	665	PEN-0163.pdf
150-005-780-1	CAMPBELL KYLE BRANDON	R11 T09 S00 SD 31 FR	1.081	OR225	665	PEN-0064.pdf
150-005-780-0	CAMPBELL KYLE BRANDON	R11 T09 S00 FR 3 SD 1	2.563	OR225	665	PEN-0266.pdf
150-005-360-0	CEEJAY INVESTORS LLC LC-DON & L	R11 T09 S00 FR 3 SD 2	2.662	OR212	1863	PEN-0042.pdf
150-005-350-0	CEEJAY INVESTORS LLC LC-DON & L	R11 T09 S00 FR 3 SD 2	2.08	OR212	1863	NoSurvey.pdf
150-000-310-1	COUNTS GREGORY C & WANDA K	R11 T09 S00 SD 29 FR	1.279	OR232	5216	PEN-0058.pdf
150-001-270-0	DOTSON ROGER MORGAN MARCEL &	R11 T09 S00 FR 3 SD 2	0.26	OR18	653	NoSurvey.pdf
150-005-920-0	FISHER JOHN	R11 T09 S00 FR 3 SD 4	49.409	OR176	109	PEN-0081.pdf
150-003-920-0	HALL CORY C	R11 T09 S00 FR 3 SD 1	2	OR231	2978	NoSurvey.pdf
150-002-320-0	HALL SHEILA L	R12 T09 S00 FR 3 SD 1	0.79	OR53	190	NoSurvey.pdf
150-003-240-0	HOOK JOHN	R11 T09 S00 FR 3 SD 1	39.302	OR225	557	PEN-0076.pdf
150-005-770-0	JENKINS WILLIAM J	R11 T09 S00 FR 3 SD 1	1.862	OR194	716	NoSurvey.pdf
150-005-240-0	JUNN EDWARD L	R12 T09 FR 3 SD 5	0.929	OR203	3085	PEN-0127.pdf
150-005-240-2	JUNN TRENT D & AMY R	R12 T9 FR3 SD38	2.05	OR235	5462	PEN-0345.pdf
150-004-670-0	KEFFER EDWARD R & KAREN S	R11 T09 S00 FR 3 SD 2	0.61	D.V 202	391	PEN-0016.pdf
150-004-660-0	KEFFER EDWARD R & KAREN S	R11 T09 S00 FR 3 SD 1	0.21	D.V 202	391	NoSurvey.pdf
150-003-240-1	KINCAID MATTHEW J	R11 T09 S00 SD 34 FR	1.541	OR202	2173	PEN-0175.pdf
150-005-240-1	LEMON JESSE C & TONYA R	R12 T09 S00 SD 35 FR	1.211	OR82	626	PEN-0184.pdf
150-000-310-2	LOCKE JAMES A	R11 T09 S00 SD 30 FR	0.081	OR231	3211,5	PEN-0125.pdf
150-000-310-0	LOCKE JAMES A	R12 T09 S03 SD 13	1.416	OR 231	3211,5	PEN-0125.pdf
150-005-920-2	MCGREW CHARLES WESLEY	R11 T09 S00 SD 36	1.062	OR220	1789	PEN-0185.pdf
150-005-930-0	MCGREW CHARLES WESLEY	R11 T09 S00 FR 3 SD 1	8.18	OR220	1789	NoSurvey.pdf
150-005-920-1	MCGREW CHARLES WESLEY	R11 T09 S00 SD 32 FR	37.31	OR220	1789	PEN-0081.pdf
150-003-810-0	MCGREW CHARLES WESLEY	R11 T09 S00 FR 3 SD 2	10.61	OR220	1789	PEN-0014A.pdf
150-003-800-0	MCGREW CHARLES WESLEY	R11 T09 S00 FR 3 SD 2	1.67	OR220	1789	NoSurvey.pdf
150-003-830-0	MCGREW RICHARD A & WILMA J	R11 T09 S00 FR 3 SD 9	0.52	D.V 142	713	NoSurvey.pdf
150-003-820-0	MCGREW RICHARD A & WILMA J	R11 T09 S00 FR 3 SD 6-	3.33	D.V 142	713	NoSurvey.pdf
150-002-950-0	NICHOLS JACOB G & WILSON ERICA D	R11 T09 S00 FR 3 SD 7	1	OR227	2670	NoSurvey.pdf
150-000-830-0	SMITH KURT THOMAS JR & KELLY LY	R11 T09 S00 FR 3 SD 2	0.22	OR233	1044	NoSurvey.pdf
150-000-840-0	SMITH KURT THOMAS JR & KELLY LY	R11 T09 S00 FR 3 SD 2	0.3	OR233	1044	PEN-0028.pdf
150-004-160-0	VOLAND LESLIE P & DAWN MICHELLE	R12 T09 S00 FR 3 SD 3	5.39	OR 217	3416	NoSurvey.pdf
150-004-150-0	VOLAND LESLIE P & DAWN MICHELLE	R11 T09 S00 FR 3 SD 2	55.587	OR217	3416	PEN-0080.pdf
150-004-140-0	VOLAND LESLIE P & DAWN MICHELLE	R11 T09 S00 FR 3 SD 1	101.22	OR 217	3416	PEN-0080.pdf
150-004-140-1	VOLAND LESLIE P DAWN MICHELLE	R11 T09 S00 SD 37 FR	2.078	OR228	2461	PEN-0315.pdf
150-005-990-0	WEAVER CARMA LC-TRACI RANEE KI	R11 T09 S00 FR 3 SD 2	1.692	OR186	145	NoSurvey.pdf



Boundaries			
	Hydro		Section
	Roads		Lot
	County		Township
	Parcel		ROW



Source: Morgan County Engineer's Office
 Author: Marcia Wolfe
 Date: 12/31/20



Disclaimer: The information that these maps contains is for reference purposes only. Please bring any erros to the attention of the Engineer's Office staff. Thank you